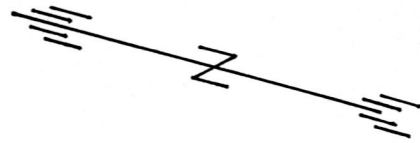
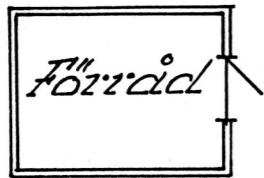
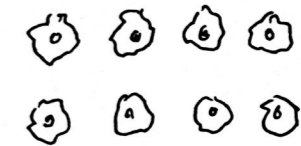
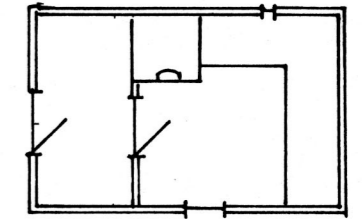
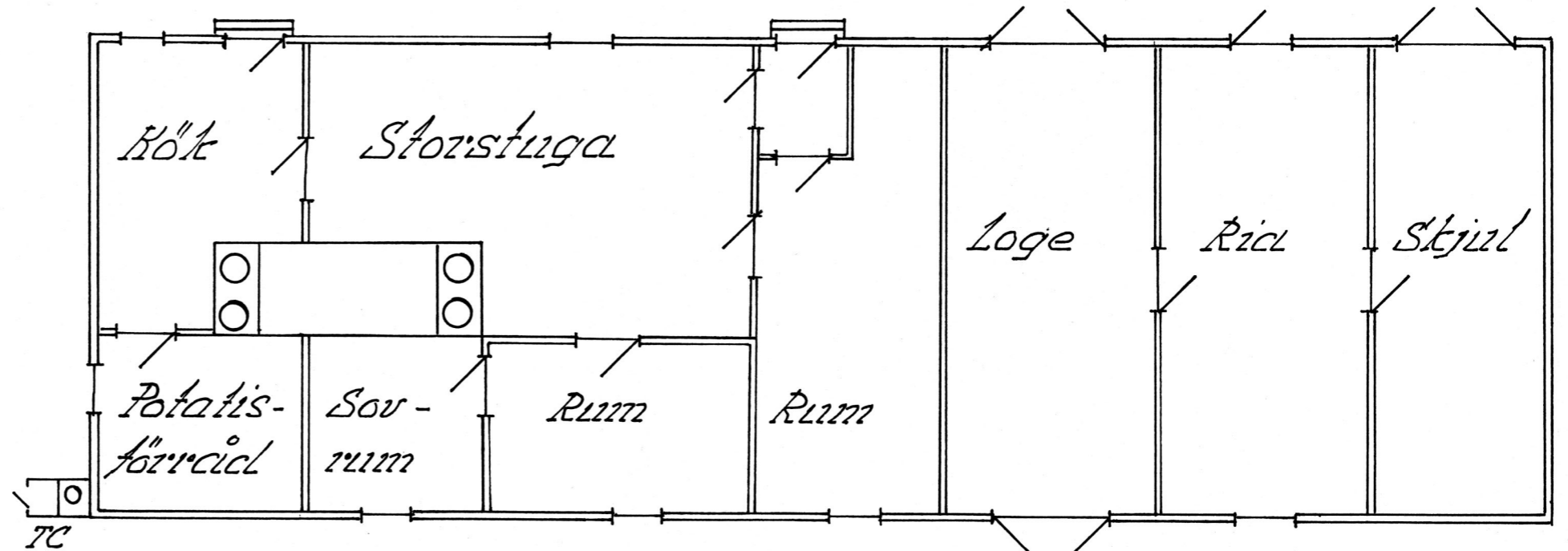
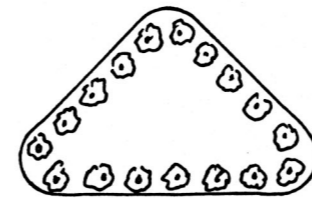
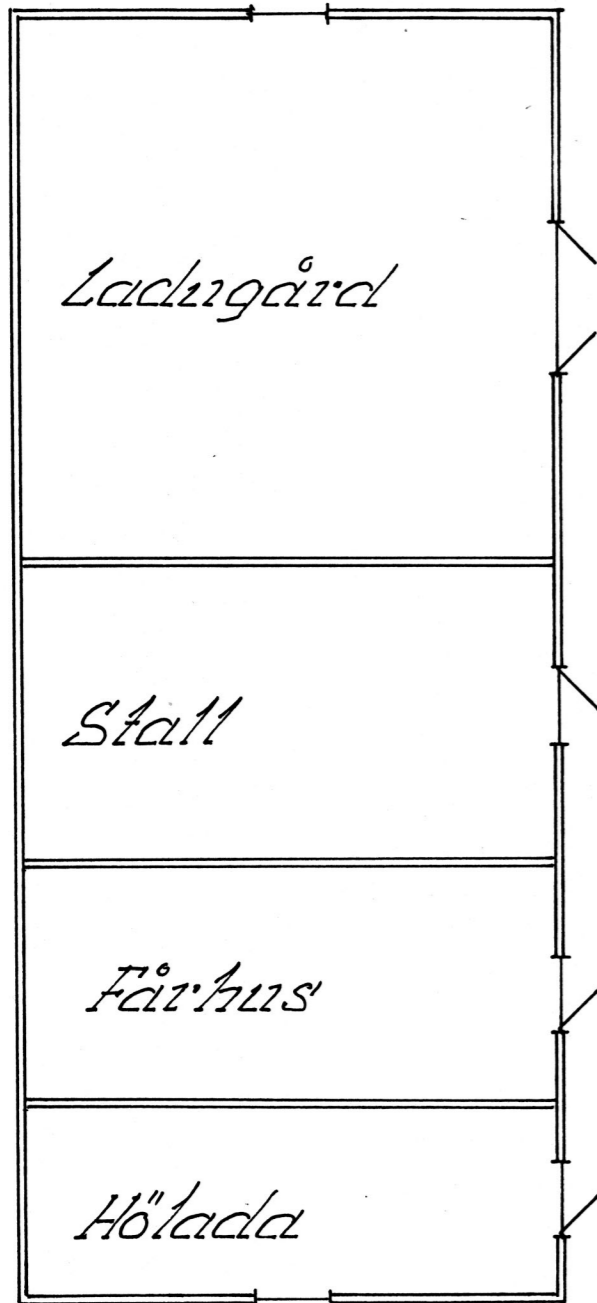
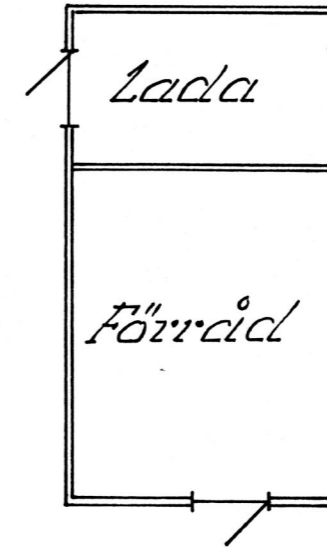
 Brunn



 Fruktträd



Bastu



Samtliga hus byggda i liggande timmer
Halmtak.
Byggår: 1800-talet

Gård	Åtsve 1944 Nr A 100
Ägare	Lovisa Ekman
By, Ort, Land	Luksby, Riktul, Estland
Uppgiftsl.	Sigrid Heyman
Ritad av	Herman Treiberg
Skala:	1:100 Tällingby 90-03-14