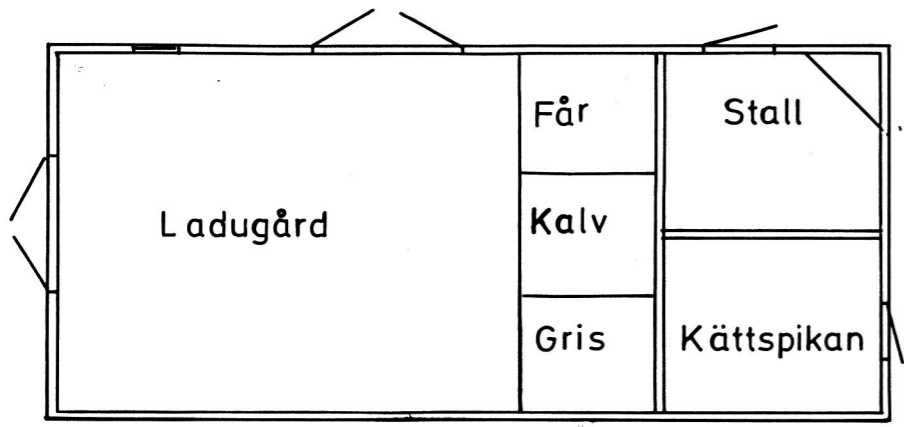
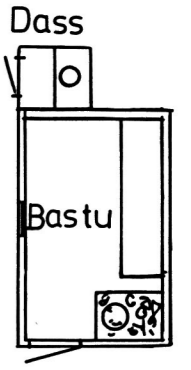
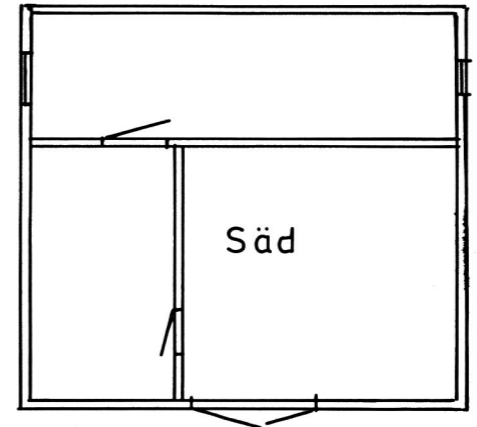
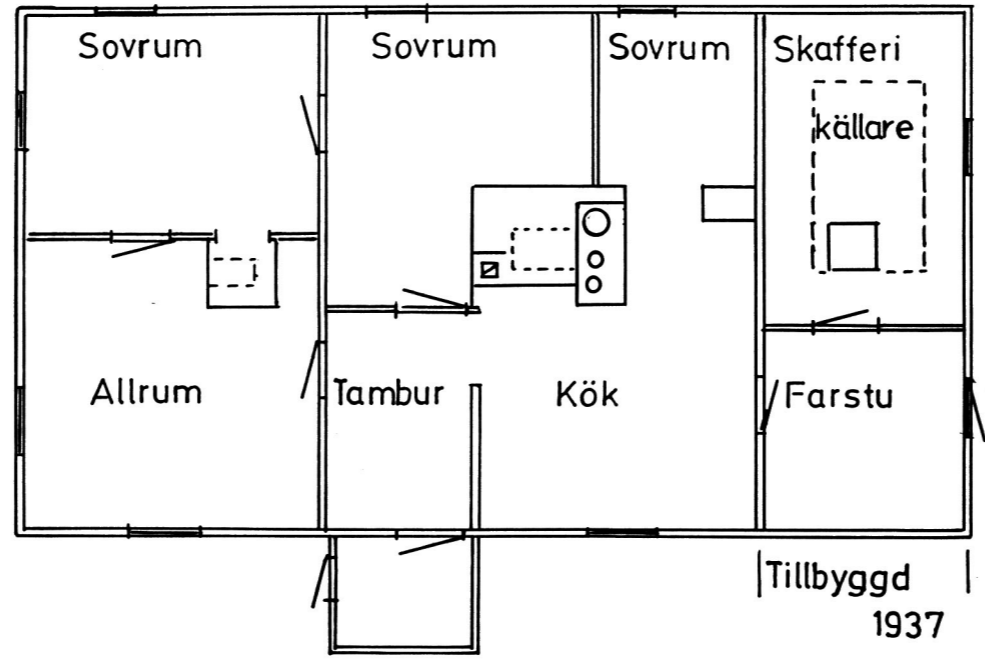
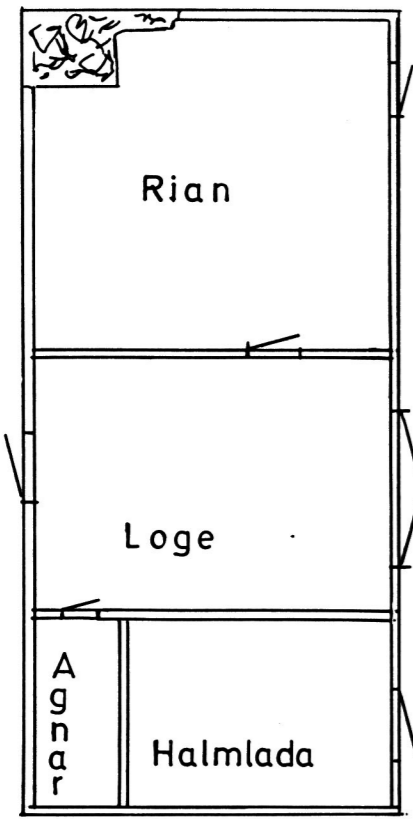
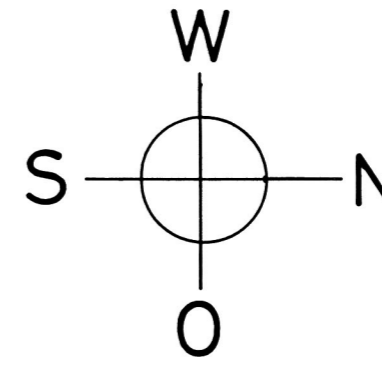


Fastigheten byggd 1925  
 Ombyggd 1932



Gård	Karjasa	Nr A-131
Ägare	Anton Vesterberg	
ByOrtLand	Norrby	RICKUL ESTLAND
Uppgiftsl.	Einar Vesterberg	
Ritad av	Arne Strömquist	
Skala	1:100	