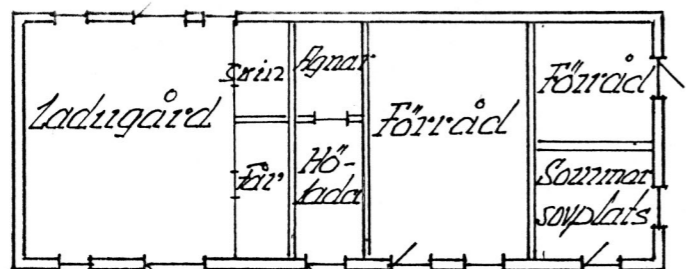


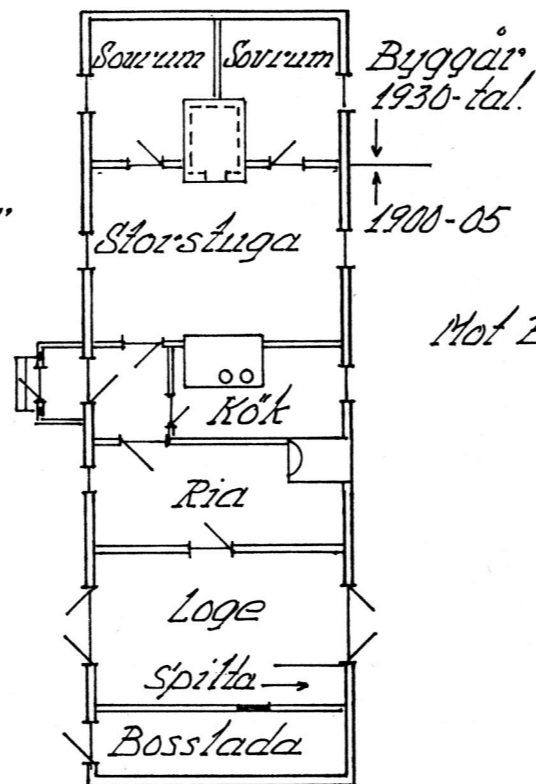
Boningshus: liggande timmer, spantat



Hägg

Appelträd

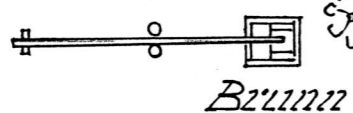
Bärbuskar



Byggtår  
1930-tal.

1900-05

Mot Bäcksvä Johannes →

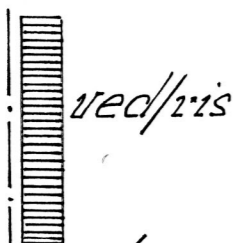


Brunn

Lönn

Lindar

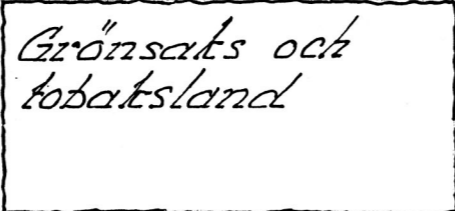
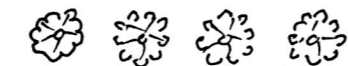
Hägg



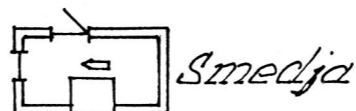
Stjul

Väggar av  
slående slavor.  
Halmtak.

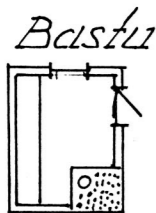
Plommonträd



Grönsaks och  
tobaksland



Smedja



Bastu

Gård	Bäcksvä 1944 Nr A110
Ägare	August Viberg
By Land	Rickul, Rickul, Estland
Uppgiftsl.	Ingrid Engman (Viberg)
Ritad av	Herman Treiberg
Skala:	1:200 Tällingby 91-01-14