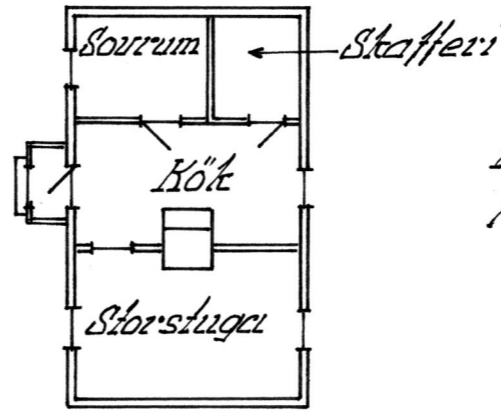
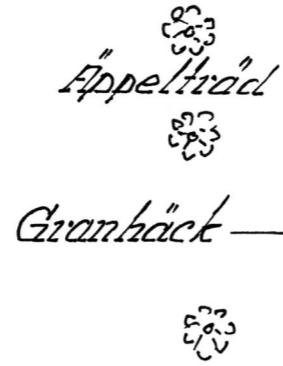
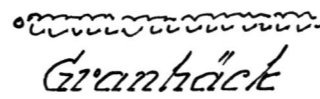
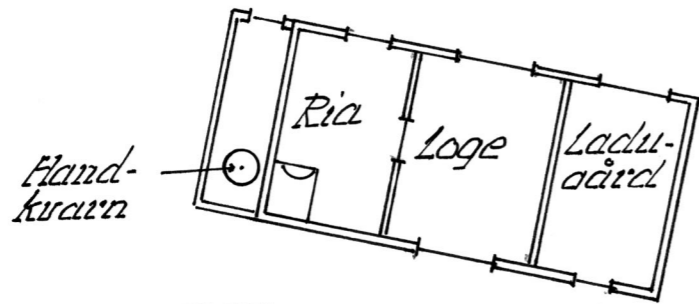


Brunn och bastu  
c.a. 80m i sydväst

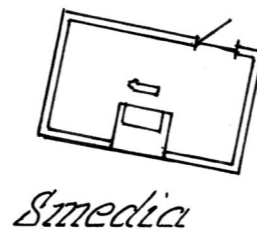


Byggår: 1925  
Halmtak



← Mot Gambyn

Väg mot "Hove" →



Nr A 150

Gård	Långorbacka 1944
Ägare	Johannes Toffer
By Land	Söderby, Rictul, Estland
Uppgifts!	Axel Westerborn
Ritad av	Herman Treiberg
Skala:	1:200   Tällingby 91-01-16