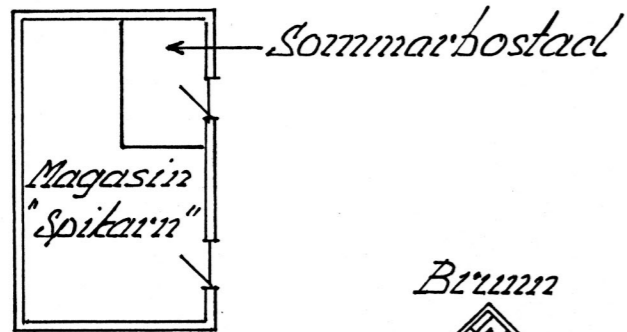
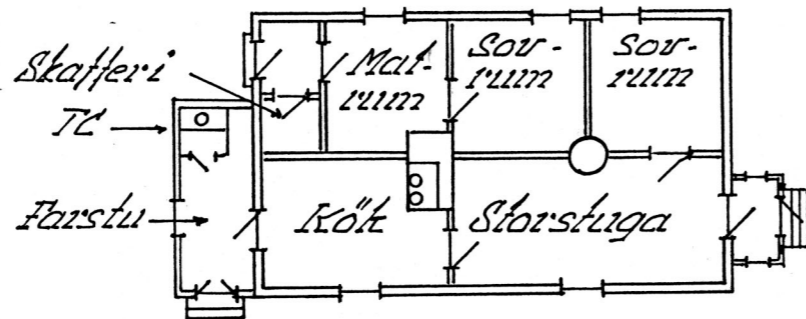
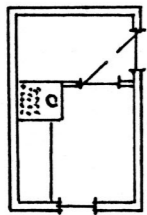
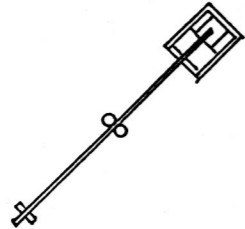


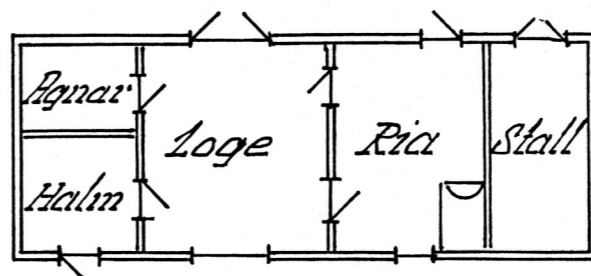
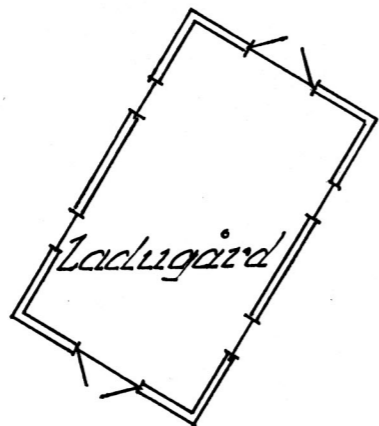
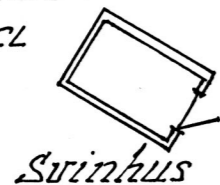
Bastu



Brunn



Gräns mot
Snickareri



Boningshus: Bräddväggar med
fyllning. Spåntak
11thus: liggande timmer. Halmtak
Byggår: 1925

Gård	Sävarså 1944 Nr A146
Ägare	Johan Koinberg
By Län	Söderby, Rickul, Estland
Uppgifts!	Henrik Koinberg
Ritad av	Herman Treiber
Skala:	1:200 Vällingby 91-01-20